

# SAIL SABANG – CRUISERS INFORMATION



## OVERVIEW

Before going to Sail Sabang	page 1 - 3
During Sail Sabang	page 5- 7
After Sail Sabang	page 7
Contact info + Download Links	page 8

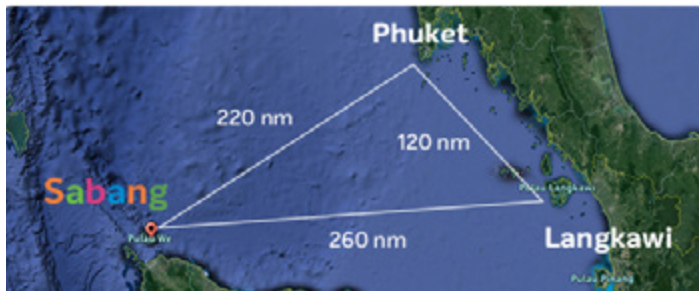


Sabang Bay

## BEFORE GOING TO SAIL SABANG

### Q Where is Sabang and what is the distance from Phuket or Langkawi?

A. Sabang is the main town on Pulau Weh island, at the North tip of Sumatra, Indonesia, north of Banda Aceh. Pulau Weh is the most Northern point of Indonesia.



### Q1 How long can the boat stay in Indonesia?

A A Temporary Import boat visa is issued for 6 months + 5 extensions of 6 months can be arranged within Indonesia (bringing the total to 3 years). The application through online registration is itself valid for 3 years. The reporting and extending process every 6 months should be done within Indonesia to Custom office. The visa itself is single entry. Leaving the country with the boat means turning in a new application.

### Q2 How long can the captain & crew stay in Indonesia?

A There are three options:

1. Free visa (received on arriving in Sabang): 30 days; no extension
2. Visa on Arrival (@USD 35,-): 30 days + 30 days extension in Indonesia
3. Pre-arranged Visa from an Indonesian Embassy/Consulate (@ USD 50,-) : 60 days and 4x extension of 30 days which can be arranged in Indonesia

-> so a total of 180 days in Indonesia without having to leave the country

### Q3 Can we have extra crew/friends on board that leave by air from Banda Aceh after Sail Sabang or that arrive by air and leave by boat?

A Crew can arrive by boat and leave by air or arrive by air and leave by boat, but must be pre-reported and all names must be included in the crew list. Yachts are not allowed to enter Indonesian waters for commercial purposes. Passengers cannot embark or disembark in Indonesia, only crew. For Sail Sabang the Event Organisers will help with this and will coordinate with the Immigration officer.

### Q4 What will be the procedure for entering Indonesia at Sabang Bay Port?

A Sabang is one of the 18 official entry points into Indonesia for pleasure yachts. Specially for the Sail Sabang event, the Indonesian authorities have arranged for a one stop-shop model: immigration – customs – harbor master procedure will be in one office adjacent to the mooring area. Upon arrival the quarantine officers will inspect the boat after which clearance is done at the office. This is all FREE of charge.  
Preregister before arrival: make your life and the official's easier by preregistering before arrival, with all info and documents on [www.yachters-indonesia.id](http://www.yachters-indonesia.id) or [yacht.beacukai.go.id](http://yacht.beacukai.go.id). See for all details the attached "Preregistration User Guide".

**Q5 What documents are required for the boat, captain and crew?**

- A 1. Vessel's registration certificate
- 2. Vessel picture (photo)
- 3. General Arrangement of boat
- 4. Crew list with all passports (scanned)
- 5. A.I.S number
- 6. Insurance (if any)
- 7. Itinerary (schedule port of calls and stops)
- 8. Good/items Form
- 9. Maritime Declaration of Health Form (download from website)
- 10. If applicable: International Animal & Plant Quarantine Certificate

Print the completed Vessel Declaration at the end of the on-line registration (at [www.yachters-indonesia.id](http://www.yachters-indonesia.id)) and hand a copy to the CIQP Officer in Sabang, together with all passports. See for all details the attached "Preregistration User Guide".

In case of no connection to internet, the Vessel declaration and Visa can be obtained upon arrival in Sabang. For additional information please contact Custom Sabang, Mr. Eryanto at +62 813 149 107 53 or [email kppbcsabang@yahoo.co.id](mailto:kppbcsabang@yahoo.co.id)

**Q6 Any other procedures we have to be aware of?**

- A Please make sure that your AIS is switched on and have your VHF on channel 16. Make a VHF call to Sabang Harbour Master upon arrival in Sabang Bay.

**Q7 What is the location where we should sail to for arrival procedures? Is there a mooring, or should we anchor? Do you have a chart / waypoint?**

- A Mooring buoys are available for 20 yachts, first come first served, other boats can anchor in the same area.

**Q8 Where is the anchorage in Sabang Bay and how safe is it?**

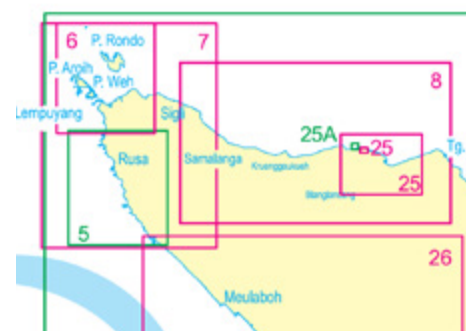
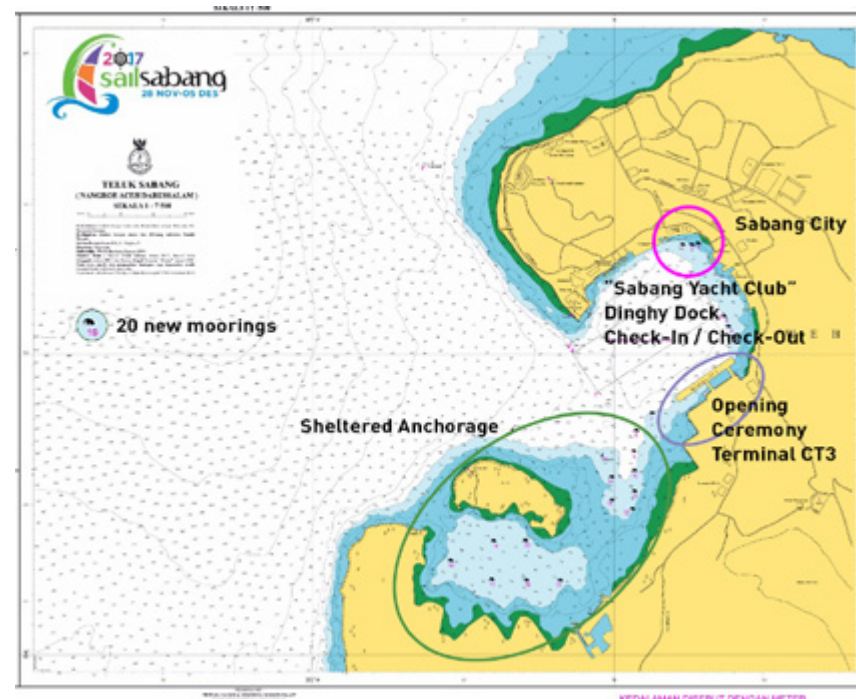
- A Sabang Bay is very well protected from all winds and waves with good holding in depth 5 – 12 meters. Easy access to shore (dinghy pier) for easy provisioning; water is clean, with no pollution and no oil in the water. Security situation is VERY good. In the deeper parts of Sabang Bay the government has installed 20 new mooring buoys for the Sail Sabang event.

**Q9 Are there any navigation hazards or specific things we need to be aware of when entering Sabang Bay and mooring or anchoring there? Eg. Uncharted rocks/wreck, coral heads, strong tidal currents?**

- A None. To enter Bay of Sabang is completely safe as long as you use updated Marine Charts produced by Indonesian Hydrographic Office.

**Q10 Where can we safely land and keep the dinghy for shore visits? Do you have a chart?**

- A A floating pontoon to land dinghies will be provided and will be guarded by a security team. The distance from mooring buoys to pontoon is not far.



**Nautical Charts:** see separate [download file](#) with selected overviews from the Chart Catalog from the Indonesian Hydrographic Office. For navigation to Sabang and beyond are at least number 4,6,7 and 8. The price is around 500,000 IDR each (approx 55 SGD). If there are sufficient Sail Sabang participants interested in buying these charts, this could possibly be arranged by the event organisers in Sabang (the charts have to be ordered from the publisher in Jakarta).

**Q What is the entry fee for Sail Sabang and what is included?**

- A. Sail Sabang is FREE for all participants and yachts and includes:
- free check-in and check-out procedure
  - three meals per day
  - welcome kit with t-shirt, caps, flag, etc..
  - 100 liters of fuel
  - participation in all activities, entries to all shows, events
  - Banda Aceh City tour and visit to Tsunami Museum
  - much more ...

**Q11 Emergency Contact details on Pulau Weh**

What	Where	Contact name + Phone
Harbour Master	Sabang, Sabang Bay	Mr. Adi +6281286861303
(Touris) Police	Sabang, Perdagangan Street	Mr. Slamet +6281380018002
First Aid - Hospital	Sabang City	Mr. Masri +628116805460
Hyperbaric Chamber		Mr. Eko +6281361405011
Airport / flights	Sabang Military Air Port	Mr Alex +628118304218
Coast Guard / Navy	Sabang Bay	Mr. Jamil +6281269517183

**Q12 Health on Sabang, should we take precautions against Malaria?**

- A No Malaria exists on Pulau Weh, but best to take general normal precautions against mosquito bites like covering yourself or use anti repellent just like everywhere else in tropical areas, to protect yourself against e.g. dengue fever. You are allowed to bring your ship's cat.

**Q13 Recommended navigation routes to Sabang from Pangkor, Langkawi or Phuket?**

- A See the usual navigation tools.

**Q14 Can we stop in other Indonesian Ports before entering in Sabang? How does that work with official Point of Entry for boat/captain/crew visa. Where are we allowed to stop?**

- A We suggest going directly to Sabang as 1st port of call. You can do a stop before Sabang but only at one of 18 designated entry ports for which you than need to have done the pre-registration procedure.

**Q15 What is the suggested dress code for Sabang when visiting on land or participating in official ceremonies?**

- A. Casual attire for normal visits. For official ceremonies, please do not wear sandals or short pants.

**Q16 Who is our one-stop main contact for all our further questions, registration, etc. for Sail Sabang?**

- A A handling team will be ready on arrival date. For all participants questions prior to the event please contact Mr. Fauzi Umar, tel. +62 8126944571.

**Q17 Can you recommend good websites about Sabang, Pulau Weh, Banda Aceh and Sumatra?**

- A Please visit:  
[www.sailsabang2017.co.id](http://www.sailsabang2017.co.id)  
<https://acehtourism.travel/>  
[www.disbupar.acehprov.go.id](http://www.disbupar.acehprov.go.id)  
[www.sabangmarinefestival.com](http://www.sabangmarinefestival.com)  
[www.indonesia.travel/en](http://www.indonesia.travel/en)



*Welcome to Sabang !*



# DURING SAIL SABANG - 28 NOV TO 5 DEC

Q18 What is the day-to-day schedule of events between 28 Nov – 5 December?

SAIL SABANG SCHEDULE OF EVENTS			
Date	Time	What?	Where?
28 Nov	all day	Arrival of participants, registration and clearance	Sabang Bay Terminal CT-1
29 Nov			
30 Nov			
1 Dec	19.00	Welcome Dinner for Sail Sabang yachting participants	Pendopo Mayor Sabang City
2 Dec	08.30 - 14.30	<b>Opening Ceremony</b> The President of the Republic of Indonesia will officially open Sail Sabang	Sabang Bay Terminal CT-3

## Events on 2 December

**MASS ACEH TRADITIONAL DANCE PERFORMANCE**  
CT 3, SABANG - ACEH, DEC. 2<sup>nd</sup>, 2017

**TRADITIONAL BOAT PARADE 2017**  
CT 3, SABANG - ACEH, DEC. 2<sup>nd</sup>, 2017

**PARAMOTOR SHOW 2017**  
CT 3, SABANG - ACEH, DEC. 2<sup>nd</sup>, 2017

## 2 Dec - 5 Dec Ongoing events at various locations in Sabang

**SABANG BAZAAR 2017**  
SABANG FAIR - ACEH, DEC. 2<sup>nd</sup> - 5<sup>th</sup>, 2017

**COFFEE & CULINARY FESTIVAL 2017**  
SABANG FAIR - ACEH, DEC. 2<sup>nd</sup> - 5<sup>th</sup>, 2017

**SABANG WONDERFUL EXPO 2017**  
CT 3, SABANG - ACEH, DEC. 2<sup>nd</sup> - 5<sup>th</sup>, 2017

**SABANG WONDERFUL PERFORMANCE 2017**  
SABANG FAIR - ACEH, DEC. 2<sup>nd</sup> - 5<sup>th</sup>, 2017

3 Dec	14.00 - 17.00	<b>Folk games</b> Sack race contest Areca nut contest Tug of war Competition	Sabang Fair/ Play Ground
	17.00 - 22.00	Wonderful Indonesia Stage	Sabang Fair

## Oth activities on 3 December

**CULTURAL CARNAVAL 2017**  
SABANG FAIR - ACEH, DEC. 3<sup>rd</sup>, 2017

**ACEH FUN DIVE**  
GAPANG, SABANG - ACEH, DEC. 3<sup>rd</sup>, 2017

**SABANG FUN BIKE 2017**  
SIMPUR TIGA, SABANG - ACEH, DEC. 3<sup>rd</sup>, 2017

**ACEH DIVE CHAMPIONSHIP 2017**  
GAPANG, SABANG - ACEH, DEC. 3<sup>rd</sup>, 2017

<b>4 Dec</b>	<b>09.00 - 13.00</b>	<b>Tour de Sabang</b>	Sabang City
	10.00- 12.00	School/Museum Visit	
	10.00 - 12.00	Lunch	
	12.00 - 13.00	ISHOMA	
	13.00 - 16.00	Free Time	
	16.30 - 22.00	Stage of Wonderful Sabang	

Other activities on 4 December.



<b>5 Dec</b>	<b>08.30 - 15.00</b>	<b>Tsunami Banda Aceh City Tour:</b>	Banda Aceh City
	08.30 - 09.30	1. Morning Coffee	
	09.30 - 10.00	2. Welcome in Tsunami Museum	
	10.00 - 11.00	3. Electric Floating Ship (PLTD Apung)	
	11.00 - 13.00	4. Lunch	
	13.00 - 14.00	5. Ship on the House	
	14.00 - 14.30	6. Shopping Time	
	14.30 - 15.00	7. Museum Aceh	
	15.00	8. Travel back to Sabang	
	15.00 - 20.00	9. Free Time	

	20.00 - 20.30	Dinner	
	20.30 - 22.00	<b>Closing Ceremony</b> 1. Representative of the Ministry of Tourism 2. Speech of Governor Aceh 3. Representative of Cruisers 4. Speech of BPKS, Head of Tourist Aceh, Mayor Sabang City	Sabang Fair Stage

A map of locations will be made available during the event.

### Q19 What else can we see and experience during Sail Sabang?

**2 Tall Ships will visit Sabang:** The KRI Bima Suci and the KRI Dewa Ruci will visit Sail Sabang. KRI stands for Kapal Republik Indonesia (Ship of the Republic of Indonesia). The 'Bima Suci' is the very new training tallship for the Indonesian Navy Cadets. The ship was recently constructed in Spain. The 'Rewa Ruci' has become too old for training purposes now.

**Free Diving Competition and Workshops** from 10 November to 1 December at Baholan, Pulau Weh.

**Cruise Ship TS Lily Marleen**, a Malaysian flagged Cruise Ship with 2300 Muslim followers will visit the Grand Mosque of Baiturahman in Banda Aceh on the 27th of November.

**Video and Photo Drone Contest** on Sabang from 28 November till 3 December.

**Seminar on Marine Tourism**, at the Fladeo Hotel, Sabang on the 29th of November, aimed at reviewing and studying the prospects, strengths and challenges of Aceh's Sabang as international investment and marine tourism destination. Sail Sabang participants are also welcome.

**Keumala Hayati Theatrical Performance**, about Keumala Hayati, Aceh's first woman admiral in the navy of the Aceh Sultanate. Her troops were drawn from Aceh's widows. 5 December at Sabang Fair.



**Q20 Where is the meeting point to socialize with other cruisers and meet the organizers?**

A The meeting point is located at the pontoon where the dinghies land at the temporary “Yacht Club” and there will be a special tent to meet with organizers and fellow participants.

**Q21 Where can we get fuel? How do we get the 100 l. free diesel?**

A The 100 liters free fuel will be provided through the Event Organisers and a schedule will be communicated once all yachts have arrived. Additional fuel for yachts may be purchased. Please make that known to the Event Organisers.

**Q22 Where can we find: water, ATM machine, supermarket, laundry, ?**

A Water: will be supplied, coordinate with the Event Organisers  
 ATM: available at Sabang town at walking distance from pontoon  
 Supermarket / food: available in Sabang town  
 Laundry: can be arranged by Event Organisers  
 Hardware store: very limited; don’t count on finding the requested items

**Q23 What are the best areas to go snorkeling/ scuba diving?**

A. The water around Pulau Way is clear. The underwater scene is spectacular, especially for the sheer amount of fish and underwater life. After the Tsunami the shallower coral reefs were damaged, but are slowly growing back. The deeper

reefs and sites are untouched with large fan corals and other corals. Be cause of it’ exposed position in the Indian Ocean the place is teeming with fish and also larger pelagics. The best area to go snorkeling is Iboih Beach, although it is getting a bit more busy there with day tourists and snorkel/dive shops. There are also dive centers at Gapang Beach. There are some 24 dive sites identified on dive maps. Check with one of the local dive centers.

[www.lumbalumba.com/diving/divesites/](http://www.lumbalumba.com/diving/divesites/)  
[www.monsterdivers.com/dive-sites](http://www.monsterdivers.com/dive-sites)

**Q24 Can you recommend a safe and reliable dive shop?**

A. We recommend both [Lumba-lumba Dive Shop](#) and Master Dive Shop.

**Q25 Can I drink alcohol in Sabang?**

A On board is not a problem. During Sail Sabang there will be a ‘Yacht Club’ for all participants where alcohol will be served. Outside the Sail Sabang period you can have an alcoholic beverage in most resorts on the island. It’s usually not available in shops

**AFTER SAIL SABANG**

**Q26 What is the check-out procedure? Where should we go? What documents are required and how long does it take?**

A You can check-out from Sabang Port or any of the 18 official port-of-entry of Indonesia. Check out procedure in Sabang is very easy. Just go to CIQP one-stop-service at the wharf. Your passport, custom papers and port clearance need to be signed and stamped by the officials.

**Q27 Can I leave the boat in Sabang while I leave the country for a while?**

A Yes, you can with the restriction of the 6 months visa for the boat. The boat will act as a ‘bond’ to ensure your return.

**Q28 Are we allowed to explore Indonesia after Sail Sabang event?**

A You can go anywhere within the restrictions of visa terms for boat and crew. It is possible to check out of Sabang (get your Port Clearance) and then continue to the next Point of Entry into Indonesia. Your boat visa and people visa will stay valid and information is forwarded to your next entry point. You do need to give your approximate itinerary for continuing in Indonesia from the first point of Entry.

**Q29 Which are the 18 official Ports of Entry for Indonesia?**

- A 1. Sabang Port, Aceh
- 2. Belawan Port, North Sumatra
- 3. Teluk Bayur Port, Padang, West Sumatra
- 4. Nongsa Point Marina, Batam
- 5. Bandar Bintan Telani, Batam
- 6. Tanjung Pandan Port, Belitung
- 7. Sunda Kelapa dan Marina Ancol Port, Jakarta
- 8. Benoa Port, Bali
- 9. Tenua Port, Kupang
- 10. Kumai Port, Central Kalimantan
- 11. Tarakan Port, East Kalimantan
- 12. Nunukan Port, East Kalimantan
- 13. Bitung Port, North Sulawesi
- 14. Ambon Port, Maluku
- 15. Saumlaki Port, Maluku Tenggara Barat
- 16. Tual Port, Maluku Tenggara
- 17. Sorong Port, West Papua
- 18. Biak Port, Papua

**Q30 What sailing area falls under the “Entry Point Sabang”?**

- A Sabang Bay, Krueng Raya, Sumur Tiga Beach, Gapang Beach (and also the other islands: Pulau Nasi, Pulau Breueh).



**Q30 What other sailing destinations around Banda Aceh can you recommend after Sail Sabang?**

- A Explore the other islands off Banda Aceh like: Pulau Nasi, Pulau Breueh (with famous historical lighthouse), Pulau Teunom, Pulau Bunta. These islands have less inhabitants and some really nice beaches and anchorages.

**Q31 What other sailing destinations in Sumatra can you recommend?**

- A Sailing destination on the West Coast: Nias Island, Mentawai Island, Padang.



**Q32 What land tours / excursions can you recommend on Sumatra?**

- A Bukit lawing Orang Utan Conservation in North Sumatra Province, Mentawai Island at West Sumatera Province.



[www.indonesia.travel/en](http://www.indonesia.travel/en)

**Disclaimer:** Information in this Q&A has been compiled by Sail Thailand with assistance of the Sail Sabang organization and team as well as we could. The content of this document is for information purposes only. No legal liability or other responsibility is accepted for any errors, omissions or statements by the persons who worked on this document.

## CONTACT INFORMATION

### Contacts for Sail Sabang

Sabang Ms. Nani  
[trisanani.n@gmail.com](mailto:trisanani.n@gmail.com)  
M: +62 813 2506 0117



Mr. Fauzi Umar  
[fauzi\\_umar\\_3@yahoo.co.uk](mailto:fauzi_umar_3@yahoo.co.uk)  
M: +62 812 694 4571 (also WA)

Phuket Marieke Derks  
Sail Thailand  
[marieke@sailthailand.net](mailto:marieke@sailthailand.net)  
M: +66 862 744 238 (also WA)



Langkawi Sazli Kamal Basha  
Sail Malaysia  
[mail@sailmalaysia.net](mailto:mail@sailmalaysia.net)  
M: +60 12 209 4418 (also WA)



## SAIL SABANG - DOWNLOAD LINKS



**Registration Form Sail Sabang**  
Fill out the form and send by email to register



**Sail Sabang Calendar of Events**  
Events before and during Sail Sabang



**Green & Clean Sail Sabang**  
SEA Yachting Magazine Issue Nov/Dec 2017



**Chart nrs. including Sumatra**  
Selected pages from Indonesian Chart Catalogue (9.2 MB)



**Users' Guide Indonesia Online Yacht Registration**  
For registering online on [yachters-indonesia.id](http://yachters-indonesia.id)



**Sail Thailand 2018**  
SEA Yachting Magazine Issue Nov/Dec 2017